

The background is a dark blue gradient with a subtle pattern of small white dots. On the left side, there are several overlapping circular elements. A prominent one is a large circle with a scale from 140 to 260 in increments of 10. Other circles are partially visible, some with dashed lines and arrows, suggesting a technical or data-driven theme.

HOW TO EFFECTIVELY MANAGE WORK PERFORMANCE IN A VIRTUAL WORLD

K.R. ANG

15.09.20



**IT IS A
V . U . C . A
WORLD !**



IT IS A V.U.C.A WORLD!

Volatility

Rapid and unexpected challenges

Uncertainty

Pending change; known "unknowns"

Complexity

Multiple key decision factors; many variables to consider

Ambiguity

Too many unknown "unknowns"

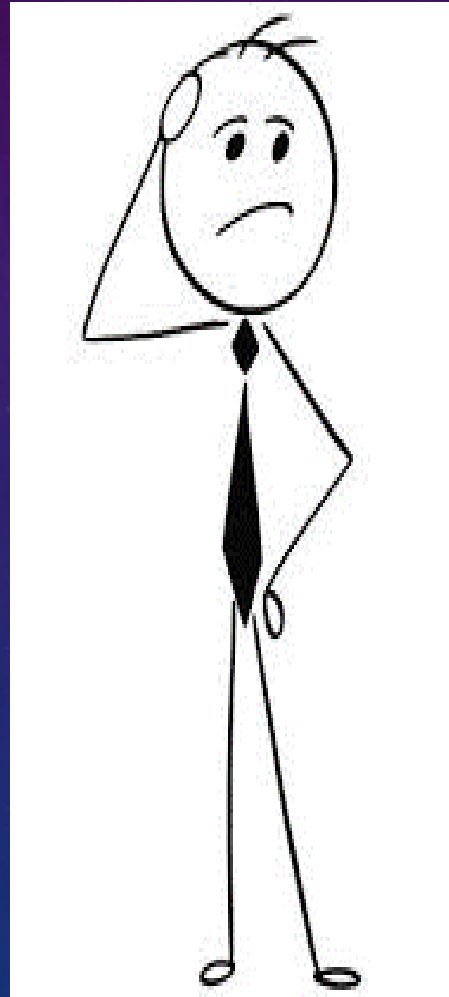


**WELCOME TO THE
“NEW NORMAL”**

WHAT HAS CHANGED?

Forced to **VIEW**
things with new
eyes

What can and must
be done differently?



Forced to **DO**
old things in
new ways

Learning and using
new technology

Recruitment

Performance
Management

The background is a dark blue gradient with a subtle pattern of white stars and technical diagrams. On the right side, there are several circular diagrams resembling gauges or dials. One large gauge has a scale from 0 to 210 in increments of 10, with a white arrow pointing to approximately 195. Below it is another gauge with a scale from 0 to 140 in increments of 10, with a white arrow pointing to approximately 110. There are also smaller circular diagrams with arrows and dashed lines, suggesting motion or cycles. The overall aesthetic is futuristic and technical.

DO WE REALLY NEED
TO “REINVENT THE WHEEL” ?

**“DON'T REINVENT THE WHEEL, JUST REALIGN
IT.”**

ANTHONY J. D'ANGELO

 Lifehack Quotes

HOW TO DEAL WITH A V . U . C . A WORLD!

Volatility

*Rapid and unexpected
challenges*



Be Prepared
Be Flexible

Uncertainty

*Pending change; known
“unknowns”*



Invest in
Information

Complexity

*Multiple key decision
factors; many variables
to consider*



Provide Focus /
Clarity

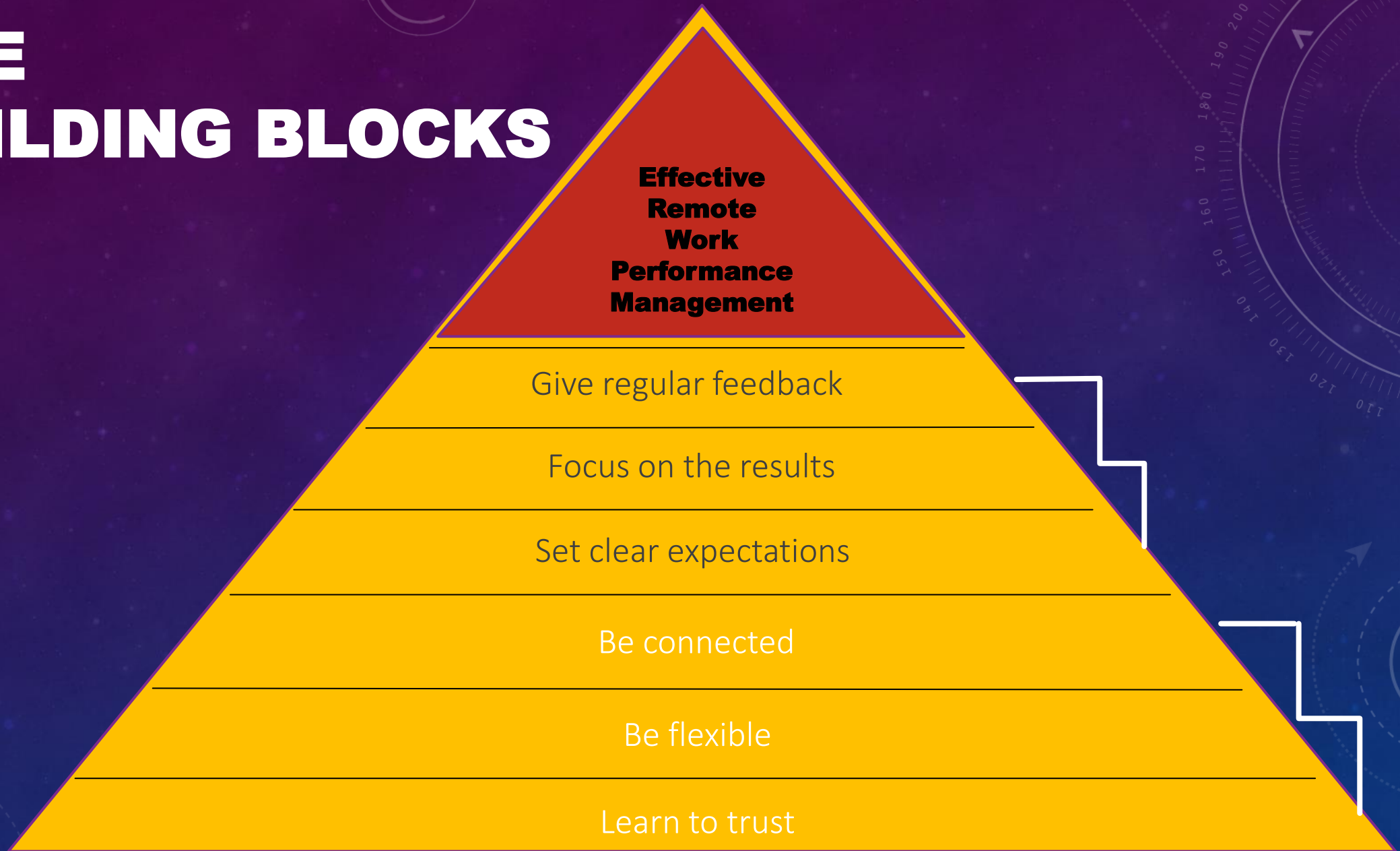
Ambiguity

*Too many unknown
“unknowns”*

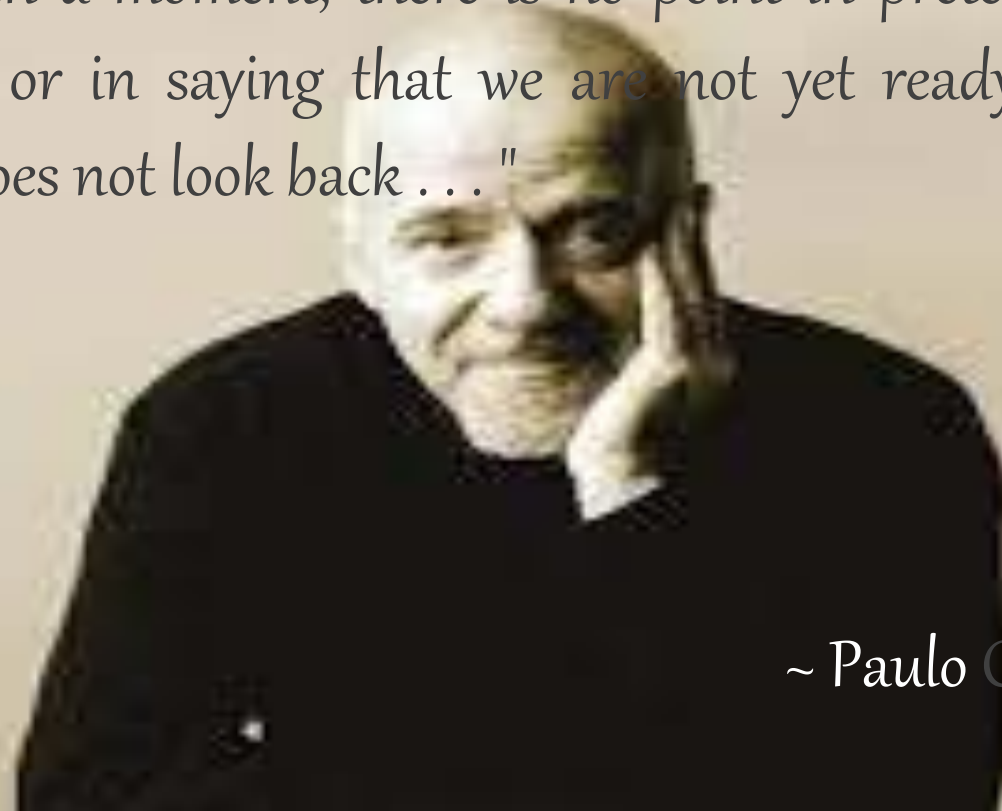


Be Open to
Experiment /
Try New Things

THE BUILDING BLOCKS



"When we least expect it, life sets us a challenge to test our courage and willingness to change; at such a moment, there is no point in pretending that nothing has happened or in saying that we are not yet ready. The challenge will not wait. Life does not look back . . ."



~ Paulo Coelho

TACK!
THANK YOU!
SALAMAT!



Coming to the Philippines in 2021! 😊